



CYP20A1 Polyclonal Antibody

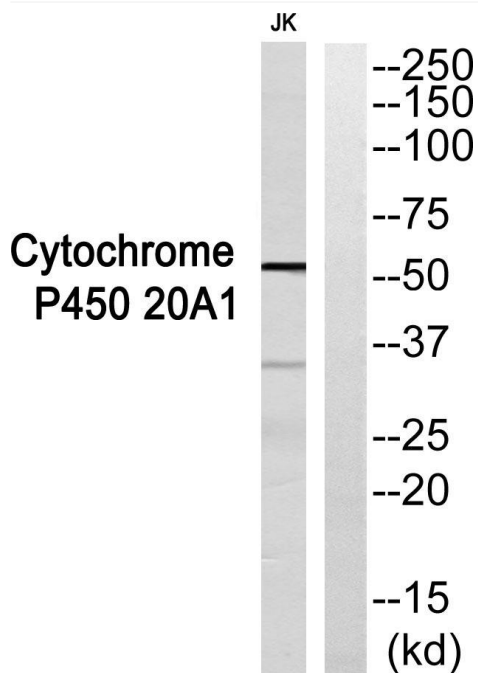
Catalog No	YP-Ab-02566
Isotype	IgG
Reactivity	Human;Rat;Mouse;
Applications	WB;ELISA
Gene Name	CYP20A1
Protein Name	Cytochrome P450 20A1
Immunogen	The antiserum was produced against synthesized peptide derived from human Cytochrome P450 20A1. AA range:191-240
Specificity	CYP20A1 Polyclonal Antibody detects endogenous levels of CYP20A1 protein.
Formulation	Liquid in PBS containing 50% glycerol, 0.5% BSA and 0.02% sodium azide.
Source	Polyclonal, Rabbit,IgG
Purification	The antibody was affinity-purified from rabbit antiserum by affinity-chromatography using epitope-specific immunogen.
Dilution	Western Blot: 1/500 - 1/2000. ELISA: 1/40000. Not yet tested in other applications.
Concentration	1 mg/ml
Purity	≥90%
Storage Stability	-20°C/1 year
Synonyms	CYP20A1; Cytochrome P450 20A1
Observed Band	53kD
Cell Pathway	Membrane ; Single-pass membrane protein .
Tissue Specificity	Blood,Lung,Pheochromocytoma,Placenta,Stomach,
Function	catalytic activity:RH + reduced flavoprotein + O(2) = ROH + oxidized flavoprotein + H(2)O.,cofactor:Heme group.,similarity:Belongs to the cytochrome P450 family.,
Background	cytochrome P450 family 20 subfamily A member 1(CYP20A1) Homo sapiens This gene encodes a member of the cytochrome P450 superfamily of enzymes. The cytochrome P450 proteins are monooxygenases that catalyze many reactions involved in drug metabolism and synthesis of cholesterol, steroids and other lipids. This protein lacks one amino acid of the conserved heme binding site. It also lacks the conserved I-helix motif AGX(D,E)T, suggesting that its substrate may carry its own oxygen. [provided by RefSeq, Jul 2008],
matters needing attention	Avoid repeated freezing and thawing!



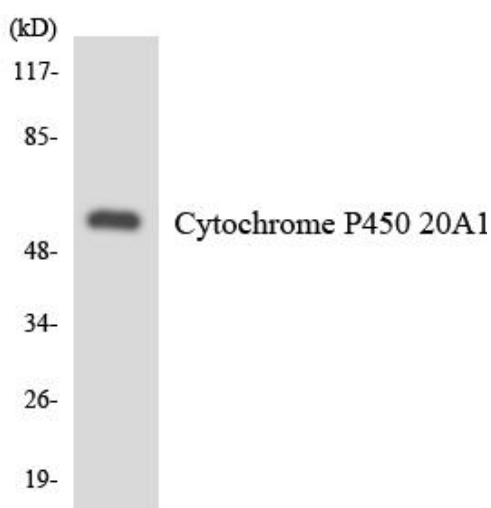
Usage suggestions

This product can be used in immunological reaction related experiments. For more information, please consult technical personnel.

Products Images



Western blot analysis of Cytochrome P450 20A1 Antibody. The lane on the right is blocked with the Cytochrome P450 20A1 peptide.



Western blot analysis of the lysates from HUVEC cells using Cytochrome P450 20A1 antibody.